

Public assessment of the usefulness of “draft” tsunami evacuation maps from Sydney, Australia – implications for the establishment of formal evacuation plans

Author:

Dall'Oso, Filippo; Dale, Dominey-Howes

Publication details:

Natural Hazards and Earth System Science

v. 10

pp. 1739-1750

1561-8633 (ISSN)

Publication Date:

2010

Publisher DOI:

<http://dx.doi.org/10.5194/nhess-10-1739-2010>

License:

<https://creativecommons.org/licenses/by-nc-nd/3.0/au/>

Link to license to see what you are allowed to do with this resource.

Downloaded from <http://hdl.handle.net/1959.4/51918> in <https://unsworks.unsw.edu.au> on 2024-04-23

Public assessment of the usefulness of “draft” tsunami evacuation maps from Sydney, Australia – implications for the establishment of formal evacuation plans

F. Dall’Osso^{1,2,3} and D. Dominey-Howes²

¹CIRSA, Interdepartemental Centre for Environmental Science, University of Bologna, via S. Alberto 163, 48100 Ravenna, Italy

²Australian Tsunami Research Centre and Natural Hazards Research Laboratory, University of New South Wales, Sydney, NSW 2052, Australia

³Med Ingegneria S.r.l., via P. Zangheri 16, 48100 Ravenna, Italy

Received: 18 January 2010 – Revised: 14 July 2010 – Accepted: 26 July 2010 – Published: 25 August 2010

Abstract. Australia is at risk from tsunamis and recent work has identified the need for models to assess the vulnerability of exposed coastal areas – a fundamental element of the risk management process. Outputs of vulnerability assessment can be used as a baseline for the generation of tsunami prevention and mitigation measures, including evacuation maps. Having noted that no evacuation maps exist for Manly, Sydney (an area recently subjected to high resolution building vulnerability assessment by Dall’Osso et al., 2009b), we use the results of the analysis by Dall’Osso et al. (2009b) to “draft” tsunami evacuation maps that could be used by the local emergency service organisations. We then interviewed 500 permanent residents of Manly in order to gain a rapid assessment on their views about the potential usefulness of the draft evacuation maps we generated. Results of the survey indicate that residents think the maps are useful and understandable, and include insights that should be considered by local government planners and emergency risk management specialists during the development of official evacuation maps (and plans) in the future.

1 Introduction

Globally, efforts are underway to assess the risk to coasts from tsunamis. Risk assessment such as that detailed in the Australian and New Zealand Risk Management Standard

(the As/NZS ISO 3100 Risk Management Standard) requires a probabilistic quantification of the hazard and permits the estimation of frequency, magnitude and return periods for events of particular magnitudes. From such work, hazard scenarios can be identified and risk managers use these to explore the exposure and vulnerability of people and infrastructure to events. Estimates of probable maximum loss (PML) may then used to develop a range of risk reduction strategies (Fig. 1).

Australia is at risk from tsunamis. The 2004 Indian Ocean and 2006 Java tsunamis resulted in flooding in NW Western Australia and the 2007 Solomon, 2009 New Zealand and 2010 Chile tsunamis were all recorded on tide gauges in Australia although there was no significant inundation (Dominey-Howes and Goff, 2010). In New South Wales (NSW) (Fig. 2a), historically, only small tsunamis have occurred (Dominey-Howes, 2007) but geological evidence suggests that megatsunamis larger than the 2004 Indian Ocean event may have occurred repeatedly (Bryant, 2001; Bryant et al., 1992a,b; Young and Bryant, 1992; Nott, 1997, 2004; Bryant and Nott, 2001; Bryant and Young, 1996; Switzer et al., 2005; Young, et al., 1995, 1996). The possibility exists that submarine slides off the NSW continental shelf could trigger large, locally damaging tsunamis and as such, Geoscience Australia has completed surveys of these slide failures (Glenn et al., 2008).

The “Australian Megatsunami Hypothesis” or “AMH” (Goff et al., 2003; Goff and Dominey-Howes, 2009; Dominey-Howes et al., 2006) is controversial (Felton and Crook, 2003; Goff and McFadgen, 2003; Goff et al., 2003; Noormets et al., 2004; Dominey-Howes et al., 2006;



Correspondence to: F. Dall’Osso
(filippodallosso@gmail.com)

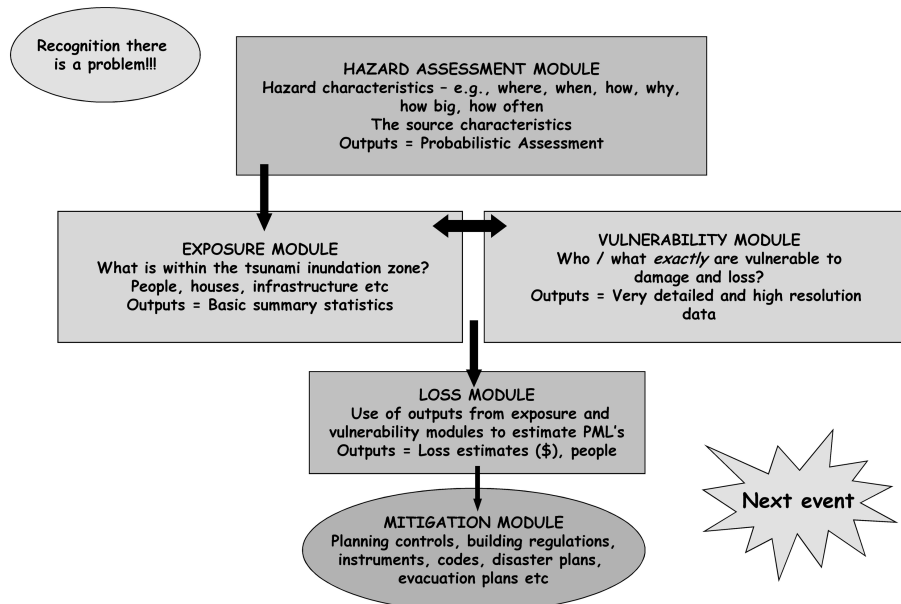


Fig. 1. The risk management process: a simplified flow diagram block indicating the main elements.

Dominey-Howes, 2007; Goff and Dominey-Howes, 2009), but if validated, it has profound implications for the coastal vulnerability of NSW and government agencies (such as the NSW State Emergency Service (NSW SES) – the lead combat agency for tsunamis in NSW) are unprepared for such events (Dominey-Howes, 2007; Dominey-Howes et al., 2006; Dominey-Howes and Goff, 2010).

Hall et al. (2008) outlined a useful “step-by-step process” to assess the tsunami risk to coasts. Step one identifies all tsunami sources, estimates frequencies and propagates waves from source into shallow coastal water providing a probabilistic wave height for any particular return period. Step two utilises inundation modelling to examine exactly how far inland and to what elevation a tsunami might flood. Presently in Australia, Geoscience Australia is the lead agency that undertakes these steps.

The last step in Hall et al.’s process is to map the “exposure” of buildings within the inundation zone and assess building “vulnerability”. To date, this has not been undertaken by any official government agency or emergency service in Australia. Such work has however, been undertaken by Dall’Osso et al. (2009a,b).

1.1 Assessment of the vulnerability of buildings to tsunami: the PTVA Model

Dall’Osso et al. (2009a,b) carried out an assessment of the vulnerability of buildings to tsunami in the Manly Local Government Authority (LGA) region, Sydney (Fig. 2b,c). The method used was the PTVA-3 model.

The PTVA is a GIS-based model developed using information about tsunami impacts and results from post-tsunami

surveys and building damage assessments. PTVA-1 was developed by Papathoma et al. (2003) and Papathoma and Dominey-Howes (2003), who identified and ranked a series of attributes (engineering and environmental) known to be responsible for controlling the type and severity of tsunami damage to buildings. PTVA-1 required the attributes to be ranked in order of importance – a subjective procedure that relied heavily on expert judgment.

A review of the PTVA-1 attributes using post-event data from the Indian Ocean Tsunami lead to the development of a revised version of the model, PTVA-2 (Dominey-Howes and Papathoma, 2007). Dominey-Howes and Papathoma (2007) confirmed that many of the PTVA-1 attributes correlated well with the type and severity of the damage they observed and PTVA-2 featured changes to the ranking and details of the attributes. PTVA-2 was used to provide estimates of PML for a Cascadia tsunami impacting Seaside, Oregon, USA (Dominey-Howes et al., 2010).

The attributes within the PTVA Model are considered appropriate for use in assessing vulnerability and it is believed offers a robust framework to explore building vulnerability in the absence of fully developed and validated engineering vulnerability assessment models containing fragility curves. Dall’Osso et al. (2009a) improved the PTVA-2 Model by introducing a multi-criteria approach to the ranking of the attributes, thus overcoming concerns about subjective ranking. In the third version of the model (PTVA-3), contributions made by separate attributes to the overall vulnerability of the building were weighted using a new approach based on pair-wise comparisons between attributes – a method typically used in multi-criteria analysis and Analytic Hierarchy Process (Saaty, 1986).

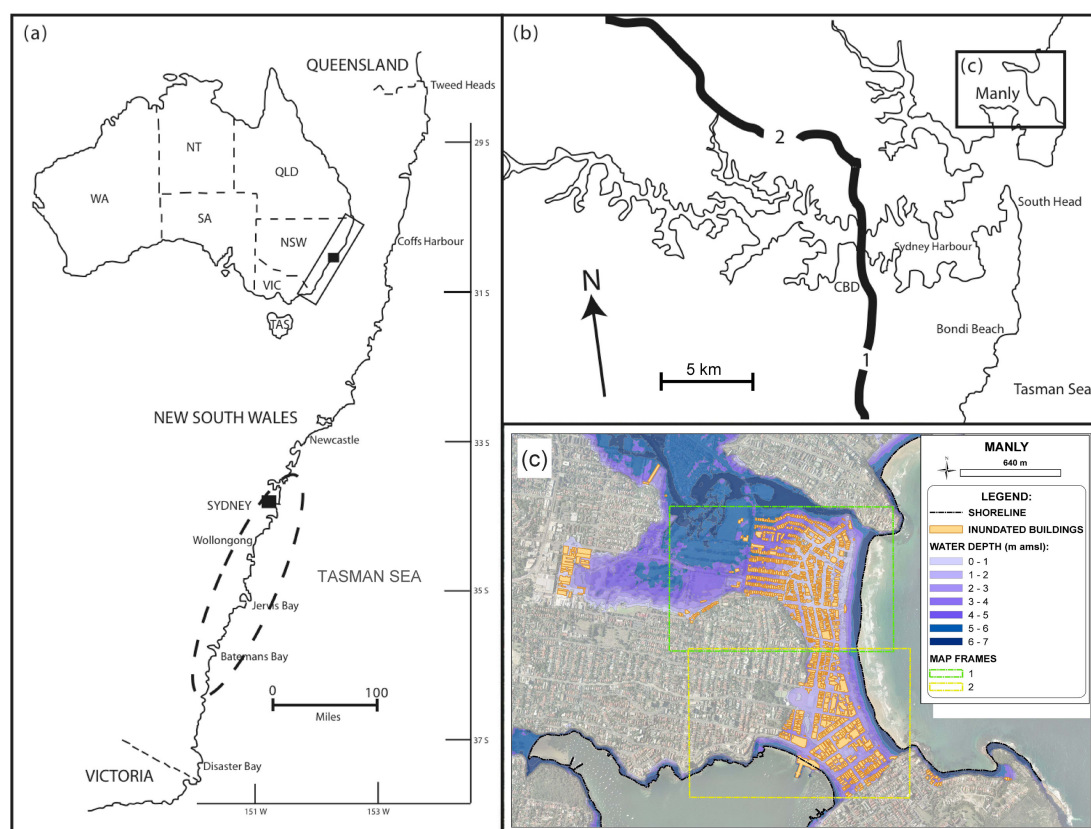


Fig. 2. (a) Broad location of the study region of Sydney located in New South Wales (NSW) on the SE coast of Australia. The hatched oval encompassing the region north of Sydney south to beyond Batemans Bay is the region reported to have been affected by Holocene megatsunami (Bryant, 2008). NSW = New South Wales, NT = Northern Territory, SA = South Australia, TAS = Tasmania, VIC = Victoria, WA = Western Australia. (b) Simplified map of the Sydney Harbour region with our specific field study area of Manly located NE of the CBD. Highways 1 and 2 are shown. (c) Detailed GIS map of our study area of Manly. Area of inundation (including relative water depths above land surface) associated with the selected tsunami scenario are shown in blue. Principal features are high-lighted and buildings inundated by the tsunami are indicated in orange. The green and yellow rectangular frames indicates the position of the vulnerability and “draft” evacuation maps shown in Figs. 3, 4, 5, and 6.

In Dall’Osso et al. (2009b), the PTVA-3 was used to undertake an assessment of 1100+ individual buildings located within the expected flood zone associated with a particular tsunami scenario (Fig. 2c). Selected results of this analysis are shown in Figs. 3 and 4, which cover the northern and the southern parts of Manly respectively (indicated as “map frames” 1 and 2 in Fig. 2c). These two areas are shown here since that are markedly different in character.

The scenario used by Dall’Osso et al. (2009b) relates to a tsunami triggered by an underwater sediment slide east of Sydney. The tsunami would reach the coast somewhere in the range of five to twenty minutes after generation (J. Sexton, personal communication, 2009). This is the worst case scenario because such an event could occur suddenly without an earthquake trigger that would otherwise initiate an alarm warning from the Australian Tsunami Warning System. With a tsunami arriving at the coast with no official warning, insufficient time would exist to fully evacuate low lying areas close to the shoreline. We assume the inundation achieves a

run-up of +5 m above sea level (m a.s.l.), occurring during a peak of high tide (+2 m a.s.l.).

1.2 Moving forward from building vulnerability assessments to evacuation maps

Individual building vulnerability assessment can be used to develop building codes and regulations, to develop a program of building retrofitting, to outline land-use zones, and to aid in emergency risk management (NTHMP, 2001). With regard to this last option, vulnerability assessments can help to formulate evacuation maps (Schiermeier, 2005a,b).

Evacuation mapping is part of what has in the risk management sciences, come to be known as “the last mile” (Taubenböck et al., 2009). The “last mile” refers to that part of risk management where hazard and risk assessments are translated in to risk reduction actions and more specifically, these are communicated to the public and other stakeholders. The “last mile” is difficult to enact effectively. How the

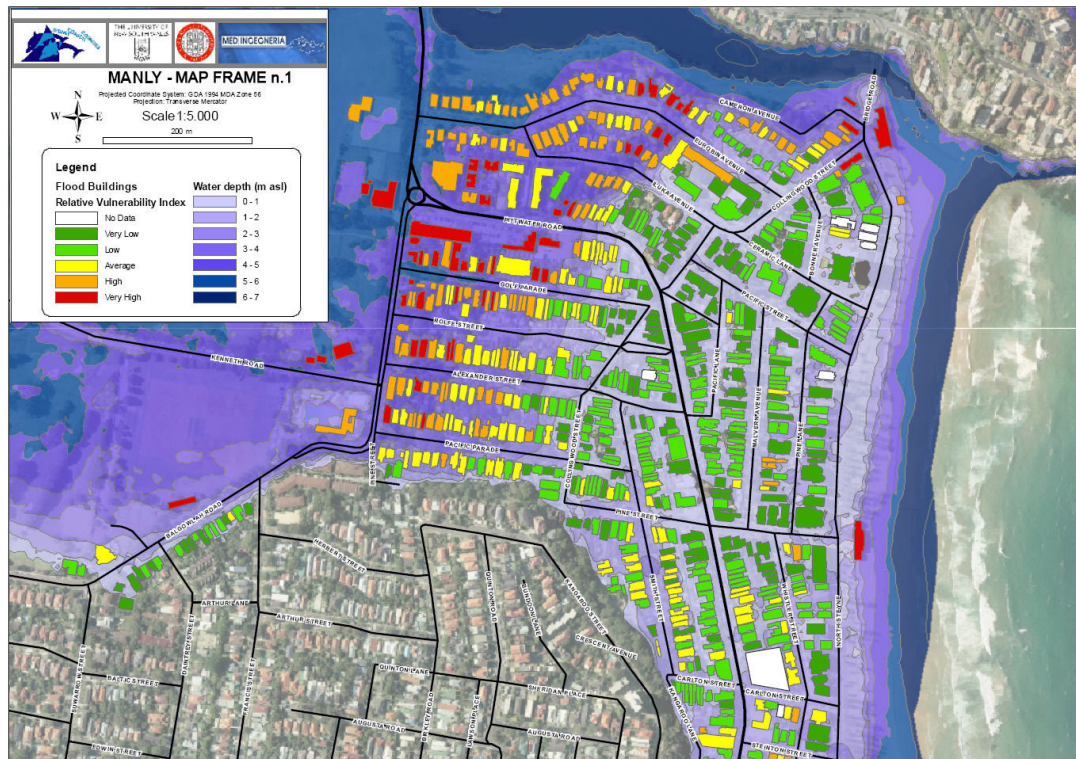


Fig. 3. Tsunami inundation and water depth in the northern part of Manly (Map Frame n. 1). The RVI scores of every building located within the inundation zone are indicated.

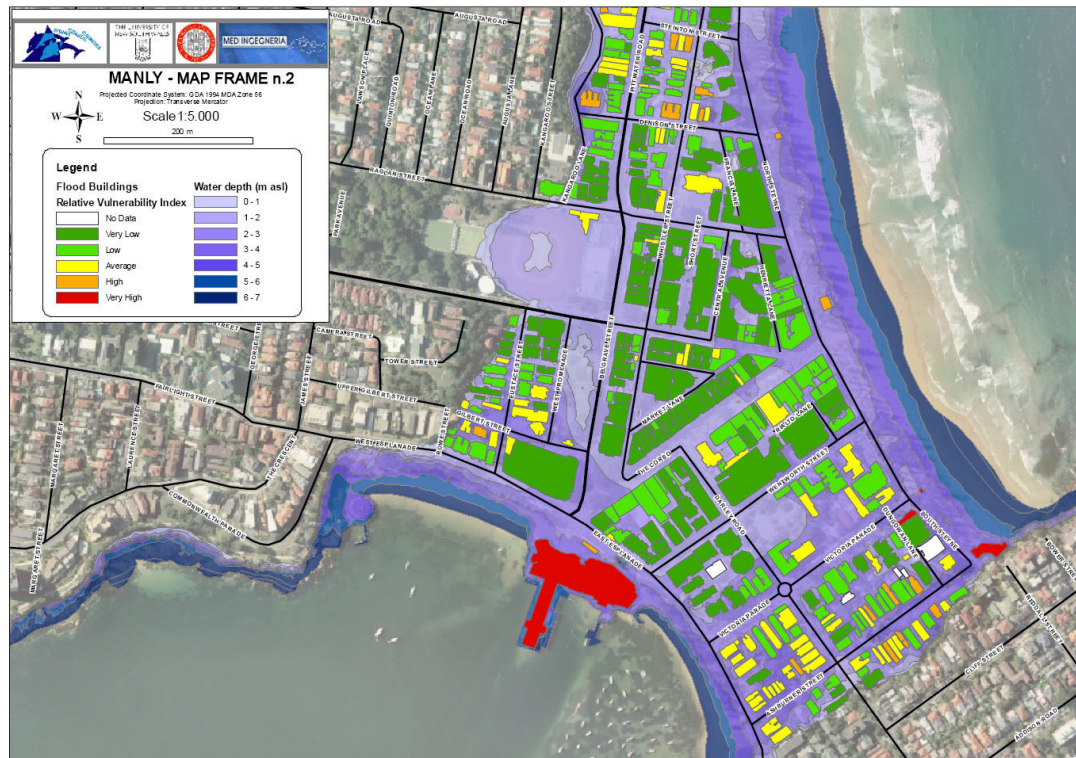


Fig. 4. Tsunami inundation and water depth in the southern part of Manly, the Central Business District (Map Frame n. 2). The RVI scores of every building located within the inundation zone are indicated.

community responds to risk reduction efforts including evacuation plans, varies enormously from place to place and for hazard to hazard. Tsunami evacuation planning has recently been the focus of a number of studies (e.g., Bellotti et al., 2009; Taubenböck et al., 2009; Post et al., 2009).

In an interesting study of significant natural disasters, Thévenaz and Resodihardjo (2010) identified a series of factors and conditions that hamper effective community emergency response during disasters. They classified these factors in to groups, but importantly, their focus on "Policy" (and its associated planning) high-lights the importance of contingency plans (which we interpret to include evacuation plans) as a vital element in effecting community response in emergencies.

Tsunami evacuation maps are used in two ways. First, they are used to identify "unsafe" areas or zones from which people must clear entirely into "safe" zones outside the evacuation areas. The second is to identify individual building structures within the inundation zone that are safe to permit "vertical" evacuation when insufficient time exists to enable complete ground-based evacuation of an area (FEMA, 2009).

1.3 Aims of this work

In light of our introduction, the aims of this study are to:

- construct "draft" evacuation maps that include the identification of safe evacuation zones and safe evacuation buildings (using the inundation scenario and data on building vulnerability undertaken by Dall'Osso et al., 2009); and
- to recruit 500 permanent residents and ask them to evaluate the potential usefulness of the "draft" evacuation maps we create.

This work is necessary because the General Manager of the Manly Local Government Authority (Manly LGA) confirmed to us that no official tsunami evacuation plans exist although the LGA is keen to develop such maps as part of an "all hazards" risk management approach. Further, the local Manly unit of the State Emergency Services (SES) confirmed that no tsunami evacuation plans exist. Whilst the local Manly unit of the State Emergency Service (the lead combat agency for responding to a tsunami) has not yet undertaken tsunami vulnerability assessment or evacuation planning, we acknowledge that at the State level, the NSW SES is working through a program of tsunami risk related activities and will undoubtedly at some point in the future, consider evacuation planning.

Examination of secondary sources of information (namely local/regional newspaper archives) reveals that the current lack of tsunami evacuation planning has been high-lighted in the local community. The Manly Daily newspaper in a critical Editorial statement indicated that there is:

... a need for preparation ... with as little time to evacuate as five minutes, authorities must work together to establish

an effective warning system ... the majority would feel more comfortable knowing that in the event of a disaster an effective warning system [including evacuation plan] was at least in place.

(Editorial, The Manly Daily, p. 11, 2009)

Further, members of the local community resident in Manly LGA who were interviewed about tsunami risk and the current lack of tsunami risk management and evacuation planning provided responses such as:

I don't think you could run very far ... it would be impossible to escape. (MB)

It does scare me a bit ... (LW)

I think it's a real possibility ... (BC)

... you can't pretend it's an impossible scenario ... Manly is situated quite low so I wouldn't want to be around if and when it hit. (KD)

(Woolley, p. 5, 2009)

Henry Wong, General Manager of Manly Council stated:

... the council had received advice that residents in 2500 houses would have five to 20 minutes from the time of a submarine landslide before the tsunami hit the beach. The council had to take warnings seriously.

(Sydney Morning Herald, p. 7, 2009)

He also stated: *... the biggest challenge would be evacuating the CBD (central business district) ...*

(Woolley, p. 5, 2009)

It is clear therefore, that there is a need for tsunami evacuation plans. Whilst we have stated our aims, we need to make it clear that this paper does not seek to explore the multitude of reasons that influence public perceptions of the draft evacuation plans we develop. We recognise such work is valuable both academically and for practical reasons. However, the aim of this work is to provide practical support and tools to the local emergency services and information to help them plan and to test the communities tolerance for our draft maps. It is not to advance the theoretical understanding of the subject area.

2 Approach and results

2.1 Generating "draft" evacuation maps

We used the outputs of Dall'Osso et al. (2009b) to explore the identification of areas that can be classified as "safe evacuation areas" and "safe evacuation buildings" during a tsunami.

In order to develop "draft" evacuation maps for Manly, we first identified several suitable evacuation points or "assembly areas" according to the best practice guidelines set out in FEMA (2009). These points/areas are indicated by coloured stars in Figs. 5 and 6 and were selected based upon the following criteria:

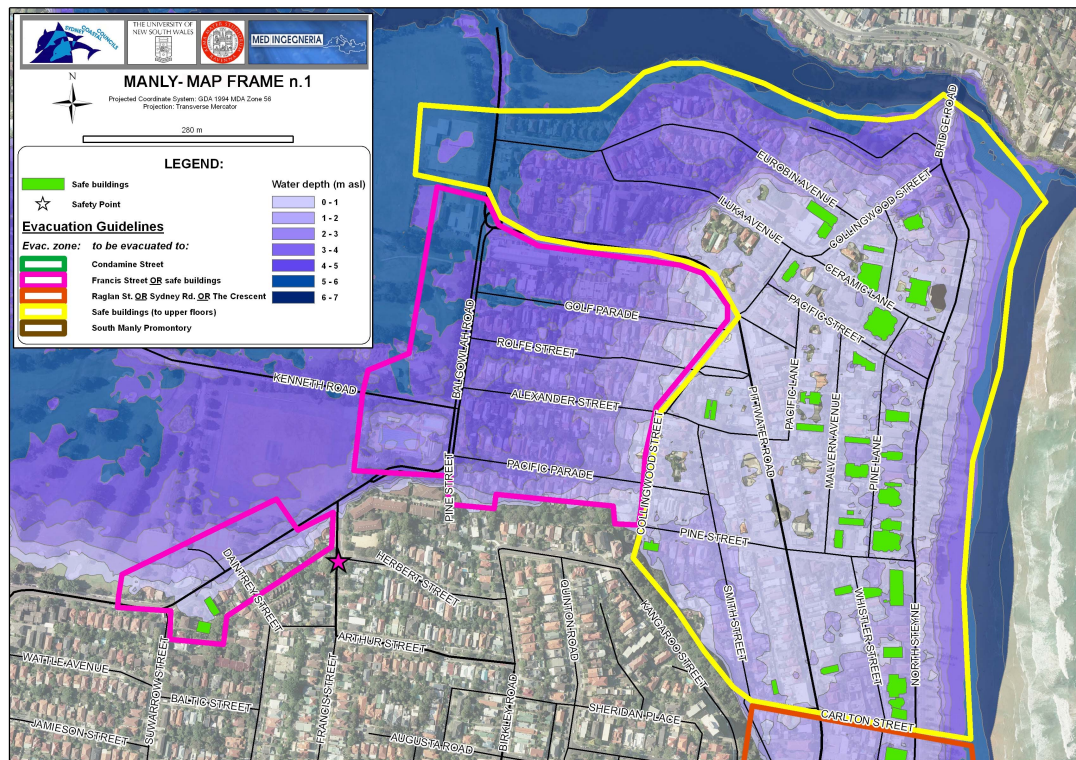


Fig. 5. “Draft” evacuation map for the northern part of Manly (map frame n. 1). The star indicates the location of the identified evacuation point. Safe buildings for vertical evacuation are colored in green.

1. they are located outside the inundation zone;
2. they are as close as possible to inundated building blocks meaning they represent the shortest horizontal evacuation distances from the nearest shoreline; and
3. they are located along main roads which is important when considering which alternative evacuation corridors are most suitable (Taubenböck et al., 2009).

Next, we recognised that it is extremely unlikely all people located within the expected inundation zone will be able to safely evacuate outside this area once inundation at the shore has commenced (FEMA, 2009). This recognition is based on the fact that some evacuation points/assembly areas are located some distance from the contemporary shoreline and it takes times to physically walk this distance. Post et al. (2009) estimated that on average, pedestrians evacuate at a minimum speed of 0.6 m/sec. This value considers the effect of land use type, terrain and slope, population density and the presence of critical facilities such as hospitals or kindergarden. These factors considerably affect the free walking speed of pedestrians when they are not hindered by other people or obstacles (Daamen and Hoogenboom, 2005; Weidmann, 1993).

By using the results of the PTVA-3 analysis of building vulnerability displayed in GIS format, we were able to iden-

tify those buildings within the inundation zone that would be suitable for permitting “vertical evacuation”. Specifically, we identified buildings within 10 min walking time of the contemporary shoreline. Our analysis reveals that people living in buildings within the yellow block, in the north part of Manly (Fig. 5), would not be able to reach any safe evacuation point/assembly area in less than 10 min. Furthermore, the bridge at the northern end of the bay could not be used for escape on foot because tsunami flow-depth over the bridge will exceed 4 m.

Given the findings, the only way people could escape tsunami inundation would be via vertical evacuation in to safe buildings (FEMA, 2009). Consequently, we identified individual buildings across the study area that could be used for vertical evacuation above the maximum expected flood level. In Figs. 5 and 6, these buildings are coloured green. These buildings are identified from the PTVA-3 Model analysis carried out by Dall’Osso et al. (2009b) because they have the lowest RVI values and because their upper floors lie well above the expected maximum flood height. That is, these buildings have at least two floors above the expected maximum flood level.

We wish to be careful to point out that in the absence of any official studies in to the vulnerability of the Manly coastal community, our analysis represents a “first pass” at indentifying those structures that in a worst case scenario,

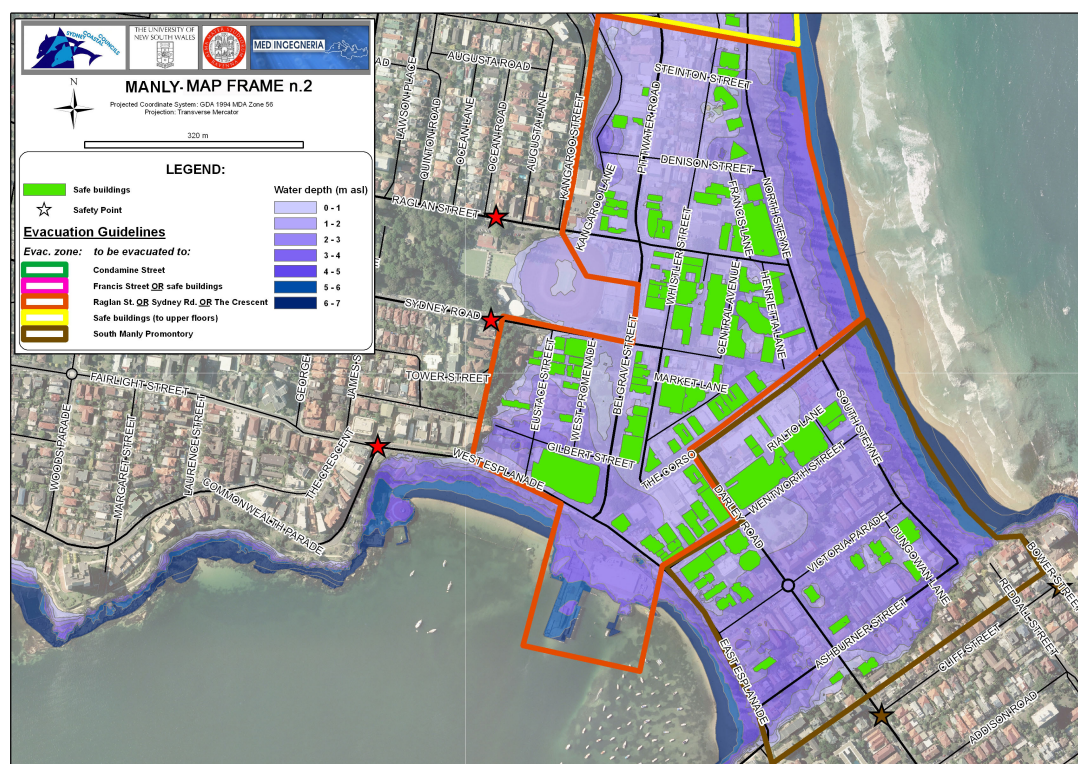


Fig. 6. “Draft” evacuation map for the southern part of Manly (map frame n. 2). The stars indicate the location of the identified evacuation points. Safe buildings for vertical evacuation are colored in green.

would be (relatively speaking) the “safest” structures for vertical evacuation. We accept that more detailed work needs to be undertaken but in the absence of any information at all, our approach represents a defensible, common sense approach.

2.2 Public evaluation of the usefulness of the “draft” evacuation maps

Once we had developed the draft evacuation maps, we wanted them to be evaluated by Manly residents (the “public”). We were specifically interested in knowing whether local residents (as well as visitors but we did not interview non-residents in this study) – for whom such maps are developed, found them potentially useful for identifying safe areas and what they did and did not like about the draft maps. We believe such analysis will assist risk managers when developing official evacuation maps at a later stage.

We developed a very simple questionnaire survey that comprised just six questions (see Table 1). We were not interested in specifics about respondent gender, age, level of education and prior tsunami experience and knowledge. We simply needed to know that they were local residents and what they thought of the draft maps. As such, our survey technique used a purposive sampling approach and followed the latest guidelines for emergency risk management socially oriented research published in this journal by Bird (2009).

We asked two types of questions: simple questions that permitted quick “quantitative” analysis (i.e., X percentage of participants think ...) (these were the qualifying question and questions 1 to 4 in Table 1) and more complex questions that required explanation of views thus permitting more detailed “qualitative” analysis (i.e., explain ...) (questions 5 and 6 in Table 1).

We found that:

- In order to recruit 500 “valid” participants (that is, people who are residents (local government tax payers) in the Manly LGA), we had to approach 894 people in total;
- 178 participants (or 35.6% of the sample) actually *live* within the tsunami inundation zones shown in either Fig. 5 or Fig. 6;
- 322 participants (or 64.4% of the sample) live elsewhere within the Manly LGA area. These people were still valid participants as their taxes help support the local emergency risk management policies and practices;
- 489 participants (or 97.8% of the sample) did not know that the local State Emergency Service (SES) have not yet developed official evacuation maps;
- 100% of our participants stated that they think the local emergency services should develop such maps;

Table 1. A quick look summary of the Short Survey questionnaire we used and the results.

	Yes	No	Total
Qualifying question: <i>Do you live some where within the Manly LGA area?</i>	500	394	894
Q1: Do you live within the flood area shown in either Fig. 5 or Fig. 6?	178	322	500
Q2: Did you know that the local emergency services <i>DO NOT</i> have such evacuation maps?	11	489	500
Q3: Do you think the local emergency services should develop such evacuation maps?	500	0	500
Q4: Do you consider the “draft” tsunami evacuation plans useful for identifying safe evacuation areas and safe evacuation buildings?	500	0	500
Q5a: What <i>DO NOT</i> you like about the “draft” tsunami evacuation maps?	“don’t understand the meaning of the coloured lines around different parts of the map”, “why is there only one safety point (star) in Figure 5?”, “the map does not show which streets I should move out of the area along”, “Figure 5 is a really big area. It seems too large. I’m not sure if I’d have time to get out of the area”		
Q5b: What <i>DO</i> you like about the “draft” tsunami evacuation maps?	“the identification of so many buildings I could go to”, “clearly marked “danger” zones”, “the names of streets so it’s easy not to get lost”, “looks very professional”, “colours make it look professional”, “because I can see exactly where I need to go to”, “it’s easy to read/understand, because I’m local, I know how to get from my place to the safe area”, “the colours make it interesting”, “the scale is great – I can’t get lost”, “I can actually picture where the safe areas are and which buildings are high lighted”, “the street labels ... I know where to go then”, the blue that shows the depth of water. It’s scary so it makes me realise I have to get out!”		
Q6: Would you like to make any other comments?	“I don’t think anything like this could affect Manly”, “why haven’t the local government done this?”, “looks a bit like science fiction to me”, “it really scares me that this whole area could be flooded”, “how would people know which buildings to get in to during an emergency?”, “where will these maps be displayed?”, “I know some of those buildings and they are private. How would I get inside if I needed to? Who would let me in?”, “how much time do we have to evacuate?”, “my concern is that there might be thousands of people in the area. How would you get them all out?”, “don’t we need to have practice evacuations?”, “how were these maps developed?”, “what about people who can’t read maps?”		

– 100% of our participants considered that our “draft” tsunami evacuation plans are useful for identifying safe evacuation areas and safe evacuation buildings.

It is not simply enough to ask participants if they do/do not know about the existence of evacuation maps and whether they think our own “draft” maps are useful, it is also important to understand why they think the way they do. Appreciating community views about what does and does not work

about an evacuation map is significant because these insights help ensure maps can be designed in a way that maximises their acceptance by the public and just as importantly, their compliance during an emergency. Questions 5 and 6 were designed to gain these insights so that these may be considered in the future design of “official” tsunami evacuation maps.

In relation to Questions 5 and 6, we report that:

- 224 participants (or 44.8% of our sample) provided comments about what they did *not* like about our draft tsunami maps (Question 5a). The vast majority of the negative comments were the same. As such, we do not list 224 responses that are the same. However, Table 1 provides a summary of the “key messages” about what our respondents did not like about the maps;
- 276 participants (or 55.2% of our sample) said there was nothing they did not like about the draft tsunami evacuation maps;
- 421 participants (or 84.2% of our sample) provided comments on what they did like about the draft evacuation maps (in response to Question 5b). Again, the responses provided by our participants were very similar and “examples” of these responses are provided in Table 1;
- 79 participants (or 15.8% of our sample) provided no response to the Question 5b; and last
- 121 participants (or 24.2% of our sample) provided responses to Question 6 and offered some other comments. Again, responses were broadly similar and the most frequently provided comments are listed in Table 1.

3 Discussion

3.1 Implications of findings for Australia

In addition to residents living within the forecast inundation zones, numerous other stakeholders will be interested in the management of risk associated with tsunamis (i.e. the emergency services, urban planners, insurance companies, real estate officers, etc.). However, here we focus on Australian Local Government Authorities (LGA's) (including their Local Emergency Management Officers, LEMO's) and LGA units of the State Emergency Service (SES) who are at the sharp end of dealing with hazardous events such as tsunamis.

In a major Australian Government report on coastal vulnerability¹ (Australian Government, 2009), it was noted that

¹We note that this report focused mostly on the vulnerability of coasts to climate change, sea level rise and storm surges. However, tsunamis present similar challenges to vulnerability as do storm surges and the questions related to risk assessment and inundation are identical.

Local Government LEMO's and State Emergency Service personnel are interested in (amongst others) questions such as:

- Which areas of the coast are likely to experience flooding associated with a tsunami of a particular magnitude/return period?
- Which areas of low-lying coastal land will need to be evacuated in the event of a tsunami of a particular magnitude/return period?
- What areas can be identified as “safe zones” to which people may be moved during an evacuation?
- What are the best routes to “safe evacuation areas”?
- In the event that it is not possible to move all people located within the expected inundation zone into “safe” evacuation areas outside of the expected flood zone, which buildings provide the best options for “vertical evacuation” above the maximum expected flood level?

The work we have done here addresses these questions. We have verified that, at present, no tsunami evacuation plans are in place for the Manly LGA area and as such, the local population remain highly vulnerable to tsunamis. Dall'Osso et al. (2009b) undertook a detailed building-by-building assessment of structural vulnerability in Manly. Here, we have used some of the results generated by Dall'Osso et al. (2009b) to explore the identification of areas that might be classified as “safe evacuation points” during a tsunami. The outputs of Dall'Osso et al. (2009b) are useful, because they are already organised in GIS layers and include most of the input data required for the drafting of the evacuation maps in a georeferenced vector format (i.e. building physical features and vulnerability, topography, terrain slope, land and building use, the number of residential units per building, the presence and location of critical facilities, etc.).

Figures 5 and 6 display those areas we think could be the subject of evacuation orders. Figure 5 shows that the recommended “evacuation area” that bounds Golf Parade, Rolfe Street, Alexander Street, Pacific Parade and Pine Street does not contain a single building that would be “safe” to evacuate in to during a tsunami associated with our scenario. That is, all buildings would be almost fully inundated and many would be severely damaged, if not completely destroyed. Therefore, people that occupy these buildings would need to fully evacuate the entire area. Having information like this means that the State Emergency Services can pre-plan the best evacuation routes, implement signage at street level and develop and engage in community education and outreach programs. Conversely, the large evacuation area of Fig. 6 parallel with the coast has many individual buildings we assess as suitable for vertical evacuation (although the western ends of Eurobin Avenue and Iluka Avenue are some what problematic).

Figure 6 shows the mixed residential and commercial area of Manly CBD. Although the flow depth above ground surface is rather high in the tsunami scenario examined in this case, many individual buildings are assessed as being suitable for vertical evacuation. Given that the ocean beach at Manly is a favourite with beach visitors and can be heavily populated on a sunny summer weekend, the close proximity of many buildings suitable for vertical evacuation, is significant.

The “draft” evacuation maps we generated show how the vulnerability data provided by Dall'Osso et al. (2009b) can be used to organise tsunami prevention measures at the local level, and they are a first step in that direction. Such maps can be used by local emergency planners as a baseline to create official evacuation plans. Such plans will have to: (1) include detailed and reliable data on the local population; (2) arrange temporary shelters in appropriate zones; and (3) include the possibility of vertical evacuation (FEMA, 2009).

To our knowledge, within Australia, no tsunami evacuation maps (draft or otherwise) have yet been developed or trialled with the public. As such, our survey of 500 Manly residents, though modest, represents a very significant test of the potential usefulness of such maps to residents who will need to be evacuated in the event of an emergency.

Responses to Questions 4, 5, and 6 (shown in Table 1) provide useful insights and feedback on our draft evacuation maps that official government agencies such as the State Emergency Service will need to keep in mind during the development of official maps in the future. In fact, we recommend that official emergency agencies actually “test” draft maps with the community/public/relevant stakeholders before finalising any future official maps in order to increase community compliance.

The main limitation of our approach is the lack of a Probabilistic Tsunami Hazard Assessment (PTHA) for New South Wales upon which we can run our vulnerability assessment (Dominey-Howes et al., 2010).

3.2 Implications of findings for other locations and recommendations

We understand that readers based in other locations will ask what value there is in our work to their areas? This is a reasonable question. We see the following issues as relevant to other locations both within Australia and internationally:

- To ensure “compliance” by the public during an evacuation exercise or real event, we suggest that “draft” evacuation maps should always be trialled with local populations to identify potential sticking points and issues that require clarification. Such trialling is likely to increase public understanding of the intent and value of evacuation maps.
- Scale seems very important. Our respondents noted that the high resolution of the maps with clearly identifiable

streets, parks and locations meant they “knew” the place contained in the map. This increased their trust in the map.

- Use of colour seems important. Colour makes the maps more interesting and seemed to help engage respondents interests; and finally
- There needs to be a clearly identified process that underpins the development of the maps and that this process is important to the public. They need to know how the maps have been generated in order to increase their confidence the map is meaningful.

The observations we have made in our study location of Manly and the implications of our work elsewhere need to be tested with larger sample sizes. We recommend that local governments together with the emergency services test some of the approaches and issues we have raised here.

4 Conclusions

As our cities expand, the exposure of our built environment to hazards such as tsunamis increases. Australia is at risk to tsunamis. Abandoning coastal regions affected by hazards such as tsunamis is simply not possible for a variety of reasons. Therefore, in order to enhance tsunami risk reduction strategies, high-resolution assessments of building vulnerability are required. Such assessments provide the building blocks upon which appropriate risk reduction strategies may be formulated. Recent work by Dall'Osso et al. (2009a, b) using a newly revised and improved PTVA-3 Model has been shown to be useful for providing assessments of the vulnerability of individual building structures to tsunamis of particular magnitudes. In this paper, we have taken the outputs from Dall'Osso et al. (2009b) and shown where and how they may be used to address important questions of relevance to local government and emergency services officers. We use a detailed case study from Manly, Sydney to explore these questions and options. We have not made specific recommendations since in our view, it is the role of responsible professional decision makers to best decide how such data might be used.

For the Local Government Area (LGA) of Manly, Sydney, we have been able to identify specific points that lie outside tsunami inundation zones that would be suitable to evacuate to. Further, where insufficient time exists to enable people to fully evacuate from the inundation zone, we have been able to identify specific buildings that would be appropriate to facilitate vertical evacuation. This is because these buildings have been assessed as having low relative vulnerability index and because they would be only partially inundated by the adopted tsunami scenario.

Importantly, we have tested the usefulness of the “draft” evacuation maps we have generated by interviewing 500 permanent residents. They overwhelmingly indicated that the

maps *are* useful. There are however, a few useful pointers about map layout and style that will be useful for the relevant emergency services to consider in the future as they move towards the development of official maps.

Acknowledgements. We would like to thank Geoff Withycombe of the Sydney Coastal Councils Group Inc. for his considerable efforts in helping to organise contact with Sydney local government authorities. We thank Manly Local Government for access to data used in the modelling undertaken in this study. James Goff at the Australian Tsunami Research Centre, UNSW is thanked for helpful discussion about ideas expressed herein. We also wish to thank three referees who made significant comments on earlier drafts of the manuscript. Residents of Manly who took time to participate in our survey are also thanked.

Edited by: S. Tinti

Reviewed by: two anonymous referees

References

- Australian Government: Climate Change Risks to Australia's Coasts, A first pass national assessment Australian Federal Government Report, Department of Climate Change, 172 pp., November 2009.
- Bird, D. K.: The use of questionnaires for acquiring information on public perception of natural hazards and risk mitigation - a review of current knowledge and practice, *Nat. Hazards Earth Syst. Sci.*, 9, 1307–1325, doi:10.5194/nhess-9-1307-2009, 2009.
- Bird, D. and Dominey-Howes, D.: Testing the use of a “questionnaire survey instrument” to investigate public perceptions of tsunami hazard and risk in Sydney, Australia, *Nat. Hazards*, 45, 99–122, 2008.
- Bird, D. and Dominey-Howes, D.: Tsunami risk mitigation and the issue of public awareness, *The Australian Journal of Emergency Management (AJEM)*, 21(4), 29–35, 2006.
- Bellotti, G., Di Risio, M., and De Girolamo, P.: Feasibility of Tsunami Early Warning Systems for small volcanic islands, *Nat. Hazards Earth Syst. Sci.*, 9, 1911–1919, doi:10.5194/nhess-9-1911-2009, 2009.
- Bryant, E.: Tsunami: the underrated hazard, Cambridge University Press, 320 pp., 2001.
- Bryant, E.: Tsunami: The underrated hazard, 2nd edn., Chichester, Springer Praxis Publishing, 342 pp., 2008.
- Bryant, E. and Nott, J.: Geological indicators of large tsunami in Australia, *Nat. Hazards*, 24, 231–249, 2001.
- Bryant, E. and Young, R.: Bedrock-sculpting by tsunami, south coast New South Wales, Australia, *J. Geol.*, 104, 565–582, 1996.
- Bryant, E., Young, R., and Price, D.: Evidence of tsunami sedimentation on the southeastern coast of Australia, *J. Geol.*, 100, 753–765, 1992a.
- Bryant, E., Young, R., Price, D., and Short, A.: Evidence for Pleistocene and Holocene raised marine deposits, Sandon Point, New South Wales, *AJEM*, 39, 481–493, 1992b.
- Chen, K. and McAneney, J.: High-resolution estimates of Australia's coastal population, *Geophys. Res. Lett.*, 33, L16601, doi:10.1029/2006GL026981, 2006.
- Daamen, W. and Hoogendoorn, S. P.: Free speed distributions – Based on empirical data in different traffic conditions, in: Pedestrian and evacuation dynamics, Springer Verlag-Berlin Heidelberg, 13–25, 2007.
- Dall'Osso, F., Gonella, M., Gabbianelli, G., Withycombe, G., and Dominey-Howes, D.: A revised (PTVA) model for assessing the vulnerability of buildings to tsunami damage, *Nat. Hazards Earth Syst. Sci.*, 9, 1557–1565, doi:10.5194/nhess-9-1557-2009, 2009.
- Dall'Osso, F., Gonella, M., Gabbianelli, G., Withycombe, G., and Dominey-Howes, D.: Assessing the vulnerability of buildings to tsunami in Sydney, *Nat. Hazards Earth Syst. Sci.*, 9, 2015–2026, doi:10.5194/nhess-9-2015-2009, 2009b.
- Dawson, A.: Linking tsunami deposits, submarine slides and offshore earthquakes, *Quatern. Int.*, 60(1), 119–126, 1999.
- Dominey-Howes, D. and Goff, J.: Tsunami: unexpected blow foils flawless warning system, *Nature*, 464, p. 350, 2010.
- Dominey-Howes, D. and Papatoma, M.: Validating a Tsunami Vulnerability Assessment Model (the PTVA Model) Using Field Data from the 2004 Indian Ocean Tsunami, *Nat. Hazards*, 40, 113–136, 2007.
- Dominey-Howes, D.: Geological and historical records of Australian tsunami, *Mar. Geol.*, 239, 99–123, 2007.
- Dominey-Howes, D. P., Verner, J., and Papatoma-Köhle, M.: Estimating probable maximum loss from a Cascadia tsunami, *Nat. Hazards*, 53, 43–61, 2010.
- Dominey-Howes, D., Humphreys, G., and Hesse, P.: Tsunami and palaeotsunami depositional signatures and their potential value in understanding the late-Holocene tsunami record, *The Holocene*, 16(8), 1095–1107, 2006.
- Felton, A. and Crook, K.: Evaluating the impacts of huge waves on rocky shorelines: an essay review of the book “Tsunami – the underrated hazard”, *Mar. Geol.*, 197, 1–12, 2003.
- FEMA (Federal Emergency Management Agency): Vertical evacuation from tsunamis: a guide for community officials, FEMA P646A, 50 pp., June 2009.
- Gissing, A., Webb, R., and Hanslow, D.: Emergency management of tsunami in New South Wales and the response to the Solomon Islands tsunami of April 2nd, 2007, *AJEM*, 23(3), 28–34, 2008.
- Goff, J. and Dominey-Howes, D.: Palaeotsunamis – does Australia and New Zealand have a shared prehistory?, *Earth Science Reviews*, 97, 159–166, 2009.
- Goff, J., Hulme, K., and McFadgen, B.: “Mystic Fires of Tamaatea”: attempts to creatively rewrite New Zealand's cultural and tectonic past, *J. Roy. Soc. New Zeal.*, 33(4), 795–809, 2003.
- Goff, J. and McFadgen, B.: Large earthquakes and the abandonment of prehistoric coastal settlements in 15th century New Zealand, *Geoarchaeology*, 18(6), 609–623, 2003.
- Hall, G., Stevens, R., and Sexton, J.: Tsunami planning and preparation in Western Australia: application of scientific modelling and community engagement, *AJEM*, 23(4), 30–36, 2008.
- Noormets, R., Crook, K., and Felton, E.: Sedimentology of rock shorelines 3. Hydrodynamics of mega-clast emplacement and transport on a shore platform, Oahu, Hawaii, *Sediment. Geol.*, 172, 41–65, 2004.
- Nott, J.: Extremely high energy wave deposits inside the Great Barrier Reef, Australia: determining the cause – tsunami or tropical cyclone, *Mar. Geol.*, 141, 193–207, 1997.
- Nott, J.: The tsunami hypothesis – comparisons of the field evidence against the effects, on the Western Australian coast, of some of the most powerful storms on Earth, *Mar. Geol.*, 208(1), 1–12, 2004.

- NTHMP: Designing for tsunamis. Seven principles for planning and designing for tsunamis, National Tsunami Hazard and Mitigation Program (NTHMP) Report, 60 pp., March 2001.
- Opper, S. and Gissing, A.: Anticipating waves of destruction, unpublished report, 8 pp., available at: <http://www.ses.nsw.gov.au/infopages/2276.html> (last access: 11 August 2010), 2005.
- Papathoma, M. and Dominey-Howes, D.: Tsunami vulnerability assessment and its implications for coastal hazard analysis and disaster management planning, Gulf of Corinth, Greece, *Nat. Hazards Earth Syst. Sci.*, 3, 733–747, doi:10.5194/nhess-3-733-2003, 2003.
- Papathoma, M., Dominey-Howes, D., Zong, Y., and Smith, D.: Assessing tsunami vulnerability, an example from Herakleio, Crete, *Nat. Hazards Earth Syst. Sci.*, 3, 377–389, doi:10.5194/nhess-3-377-2003, 2003.
- Post, J., Wegscheider, S., Mück, M., Zosseder, K., Kiefl, R., Steinmetz, T., and Strunz, G.: Assessment of human immediate response capability related to tsunami threats in Indonesia at a sub-national scale, *Nat. Hazards Earth Syst. Sci.*, 9, 1075–1086, doi:10.5194/nhess-9-1075-2009, 2009a.
- Schiermeier, Q.: The chaos to come, *Nature*, 438, 903–906, 2005b.
- Switzer, A. D. and Pucillo, K.: Sea Level, Storm, or Tsunami: Enigmatic Sand Sheet Deposits in a Sheltered Coastal Embayment from Southeastern New South Wales, Australia, *J. Coastal Res.*, 21(4), 655–663, 2005.
- Sydney Morning Herald: Manly tsunami threat, Sydney Morning Herald Newspaper, p. 7, 9 November 2009.
- Taubenböck, H., Goseberg, N., Setiadi, N., Lämmel, G., Moder, F., Oczipka, M., Klüpfel, H., Wahl, R., Schlurmann, T., Strunz, G., Birkmann, J., Nagel, K., Siegert, F., Lehmann, F., Dech, S., Gress, A., and Klein, R.: “Last-Mile” preparation for a potential disaster - Interdisciplinary approach towards tsunami early warning and an evacuation information system for the coastal city of Padang, Indonesia, *Nat. Hazards Earth Syst. Sci.*, 9, 1509–1528, doi:10.5194/nhess-9-1509-2009, 2009.
- Thévenaz, C. and Resodiardjo, S.: All the best laid plans... conditions impeding proper emergency response, In: *J. Prod. Econ.*, 126(1), 7–21, 2010.
- Weidmann, U.: Transporttechnik der Fussgänger, 2 edn., in: *Schriftenreihe des IVT*, vol 90. Institute for Transport Planning and Systems ETH Zurich, 1993 (in German).
- Woolley, R.: Tsunami warning!, *The Manly Daily*, p. 1, p. 5, p. 11, 10 November 2009.
- Young, R., Bryant, E., and Price, D.: Catastrophic wave (tsunami?) transport of boulders in the southern New South Wales, Australia, *Z. Geomorphol.*, NF, 40(2), 191–207, 1996.
- Young, R. and Bryant, E.: Catastrophic wave erosion on the south-eastern coast of Australia: impact of the Lanai tsunami ca. 105 ka?, *Geology*, 20, 199–202, 1992.
- Young, R., Bryant, E., and Price, D.: The imprint of tsunami in Quaternary coastal sediments of southeastern Australia, *Bulgarian Geophysical Journal*, 21(4), 24–32, 1995.

Copyright of Natural Hazards & Earth System Sciences is the property of Copernicus Gesellschaft mbH and its content may not be copied or emailed to multiple sites or posted to a listserv without the copyright holder's express written permission. However, users may print, download, or email articles for individual use.