

A Brackish Landscape 2003

Creator/Contributor:

Kempson, Michael

Event details:

Exhibition of Thai-Australian Contemporary Prints

Publication Date:

2005

DOI:

<https://doi.org/10.26190/unsworks/735>

License:

<https://creativecommons.org/licenses/by-nc-nd/3.0/au/>

Link to license to see what you are allowed to do with this resource.

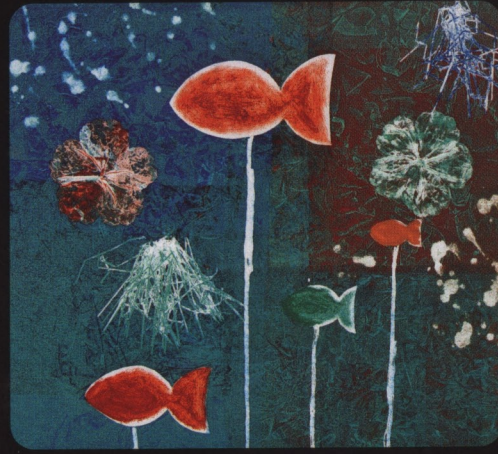
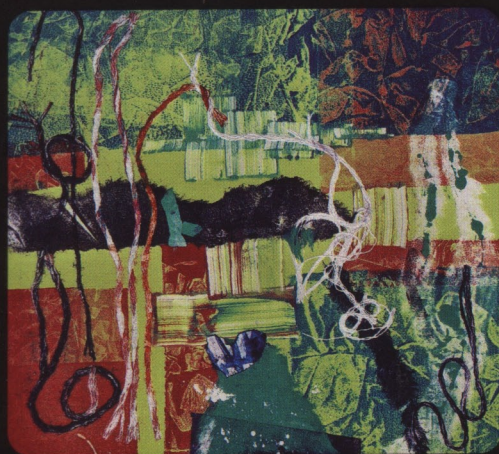
Downloaded from <http://hdl.handle.net/1959.4/44390> in <https://unsworks.unsw.edu.au> on 2024-04-26



EXHIBITION OF

THAI-AUSTRALIAN

CONTEMPORARY PRINTS 2005



Printmaking is a medium offering the artist many avenues: a rich tradition in each of the discipline areas; an editionable format allowing easy dissemination; a challenge in its near infinite technical potential and above all else, the communal dynamic of working. Printmakers share presses and equipment to realize their ideas and it is through this collaboration that the spirit of co-operation and community is fostered. It is further expressed in the relationships essential for a cohesive studio environment that, manifest on a larger scale, can bring together art schools the world over in a mutually beneficial cultural exchange.

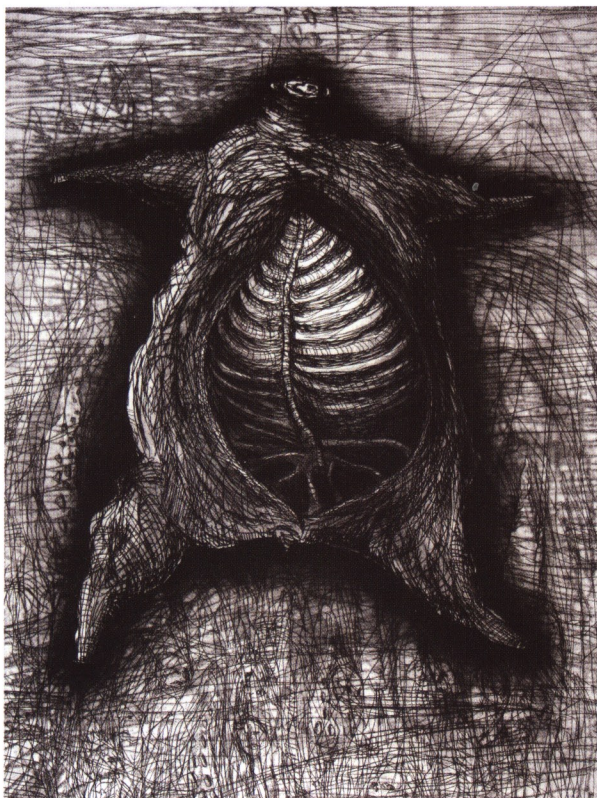
Kitikong Tilokwattanotai first suggested the idea of a print exchange exhibition during his time as an outstanding post-graduate student at the College of Fine Arts, The University of New South Wales (COFA UNSW) in Australia. During his studies he shared many experiences of his homeland, particularly of the staff and students at The Faculty of Fine Arts, Chiang Mai University in Thailand. COFA UNSW was delighted to accept an invitation to participate in this exhibition, a celebration of our shared commitment to printmaking and its potential for an ongoing relationship.

The prints in this exhibition highlight a diversity of conceptual and technical approaches, featuring works from our undergraduate and post-graduate programs, as well as the academic and technical staff. Also included are prints from Australian artists of national reputation who work at Cicada Press, an educationally focused custom printing workshop established at COFA UNSW in 2004.

I would like to sincerely thank Associate Professor M. L. Surasawasdi Sooksawasdi, Dean of the Faculty of Fine Arts and Chaivut Ruamrudeekool, Head of Printmaking for their invitation to participate in this exhibition. It is also important to acknowledge the support and expertise of Chaiyot Chandratita, Director and Somporn Rodboon, Curator of the Chiang Mai University Art Museum. Finally, the link between our institutions has been Kitikong Tilokwattanotai, and it has been his energy, initiative and enthusiasm that ensured the success of this venture.

Michael Kempson

Co-ordinator of Printmaking Studies
and Director of Cicada Press
COFA UNSW
Sydney, Australia
June 2005



CHERRY HOOD "CHARLIE" ETCHING AQUATINT, 45 x 30 CM. 2002

MICHAEL KEMPSON "A BRACKISH LANDSCAPE" ETCHING AQUATINT,
71 x 50.5 CM. 2003

ABAM CULLEN "CHICKEN MAN" RELIEF ETCHING, 50 x 38 CM. 2001

EUAN MACLEOD "NIGHT WALKING" ETCHING AQUATINT, 60 x 45 CM. 2003